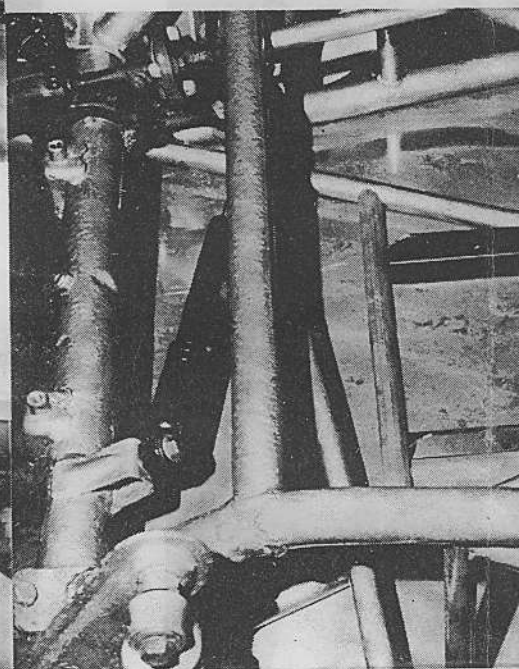
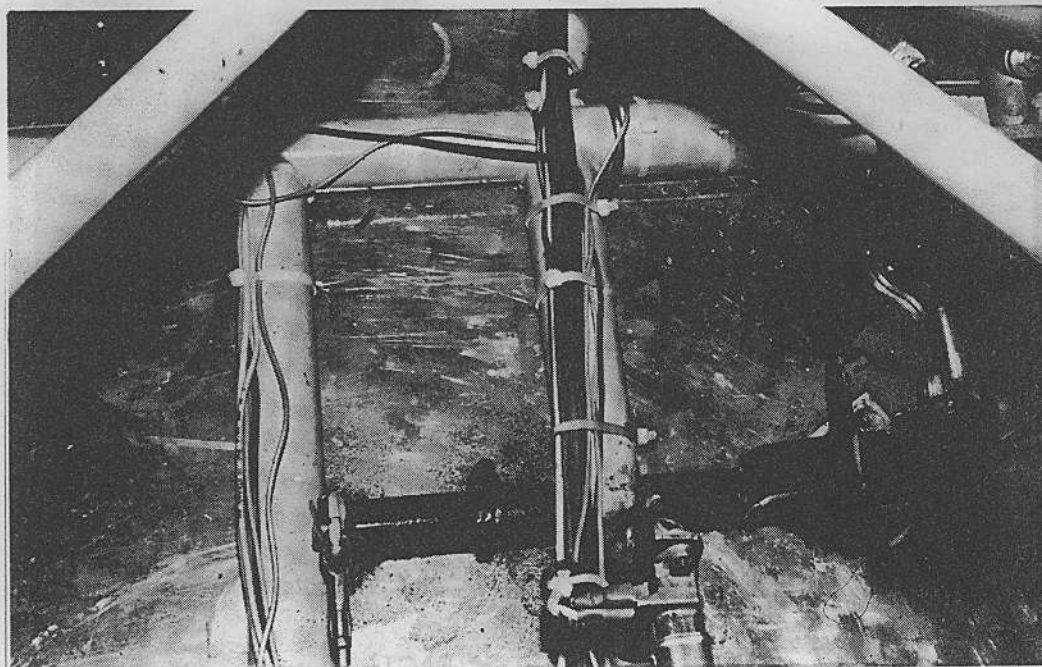


GEAR LEVER BOX AND HAND BRAKE MOUNTING POSITION

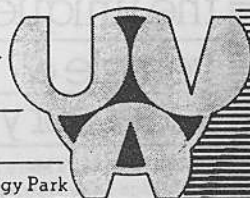


BATTERY BOX

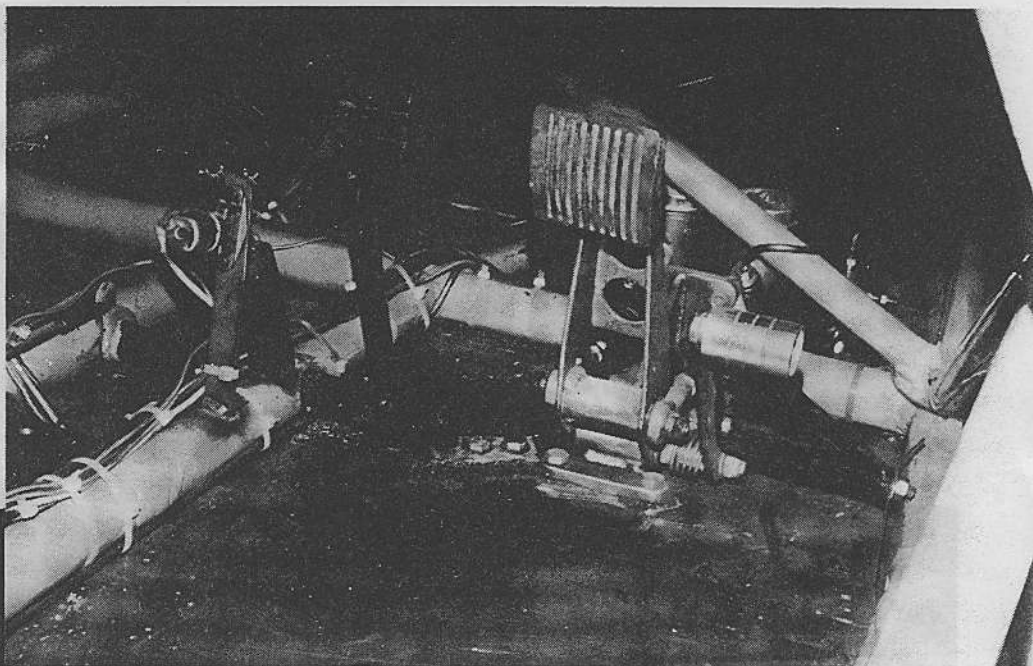


BIRD'S EYE VIEW OF CLUTCH PEDAL INSTALLATION

the unique  
vehicle &  
accessory co ltd



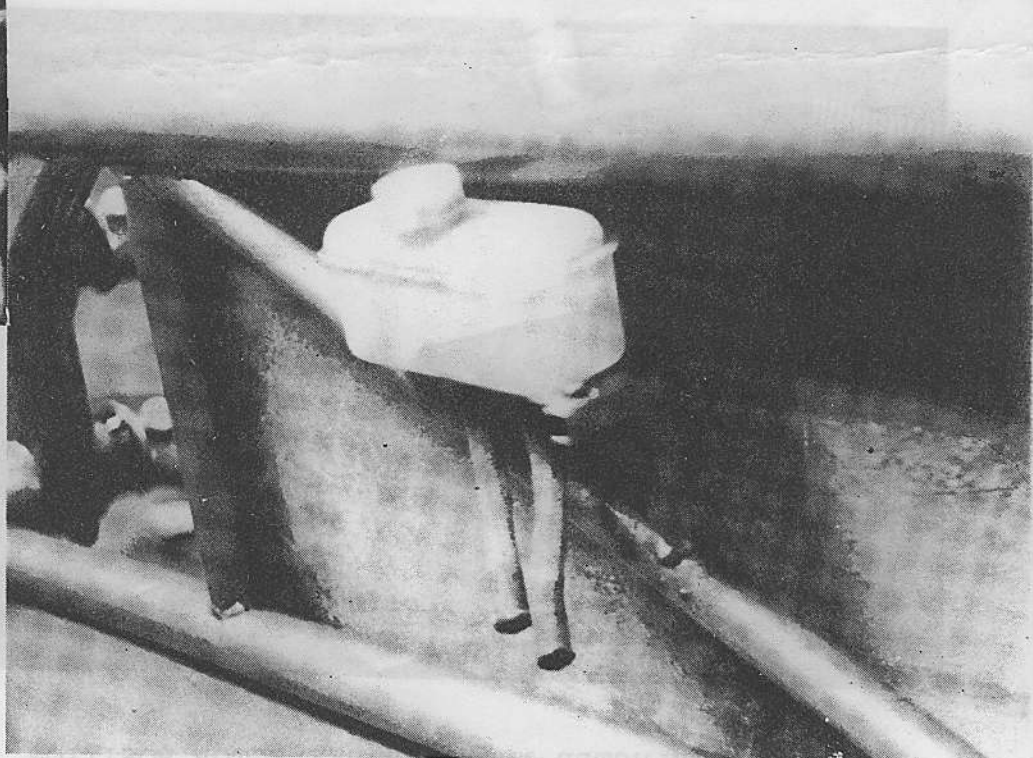
UVA Ltd Argent's Mere High Technology Park  
Hambridge Lane Newbury Berkshire RG14 5TU  
England. Telephone. 0635 33888 Telex: 848227



USING THE MECHANICAL BEETLE CLUTCH PEDAL AND  
UVA BRAKE PEDAL ASSEMBLY



BOX MOUNTING



MOUNT THE RESERVOIR FOR THE VW MASTER CYLINDER  
ON A BRACKET AS SHOWN

TD 34 A

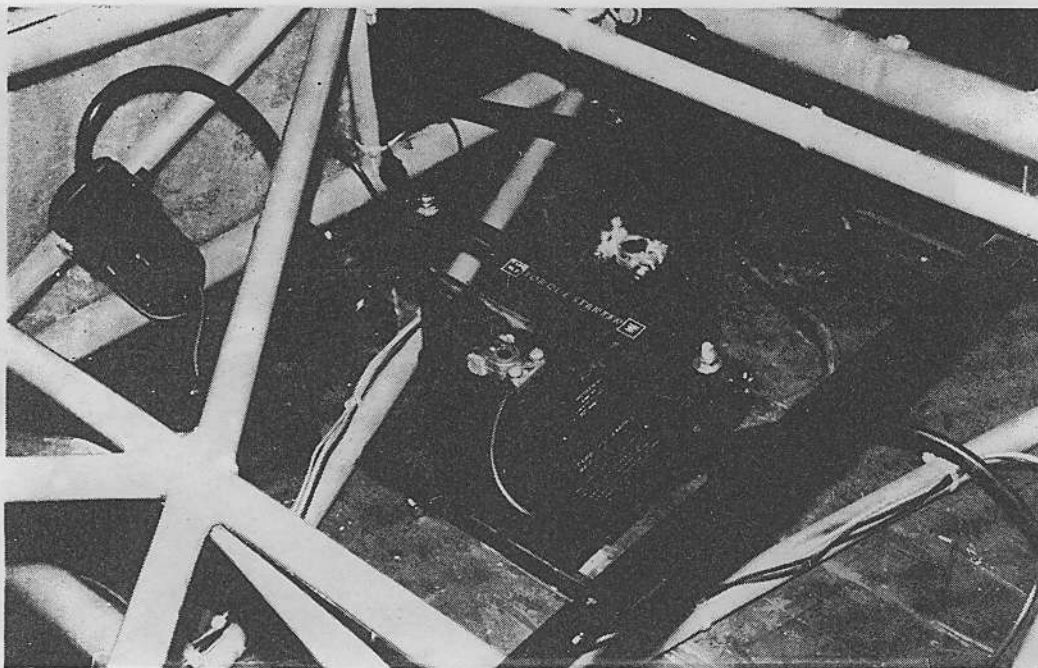
the unique  
vehicle &  
accessory co ltd



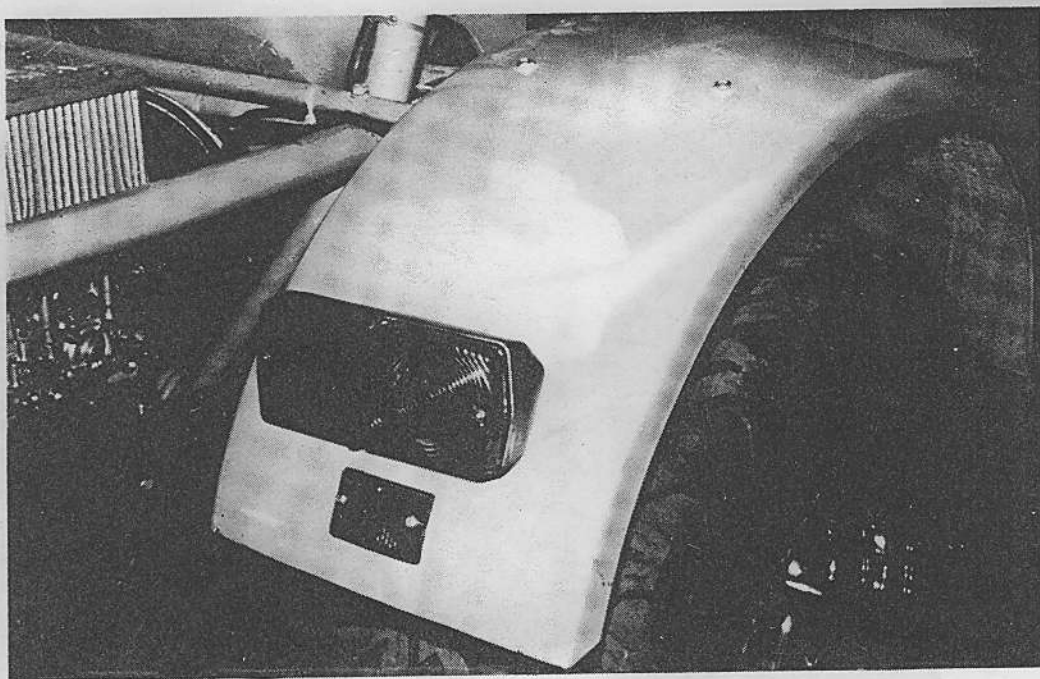
UVA Ltd · Argent's Mere High Technology Park  
Hambridge Lane · Newbury · Berkshire RG14 5TU  
England. Telephone: 0635 33888 Telex: 848227



# TECHNICAL DATA-TECHNICAL DATA-



MAKE SURE BATTERY IS FASTENED SECURELY



REAR LAMP CLUSTER AND REAR REFLECTOR POSITION

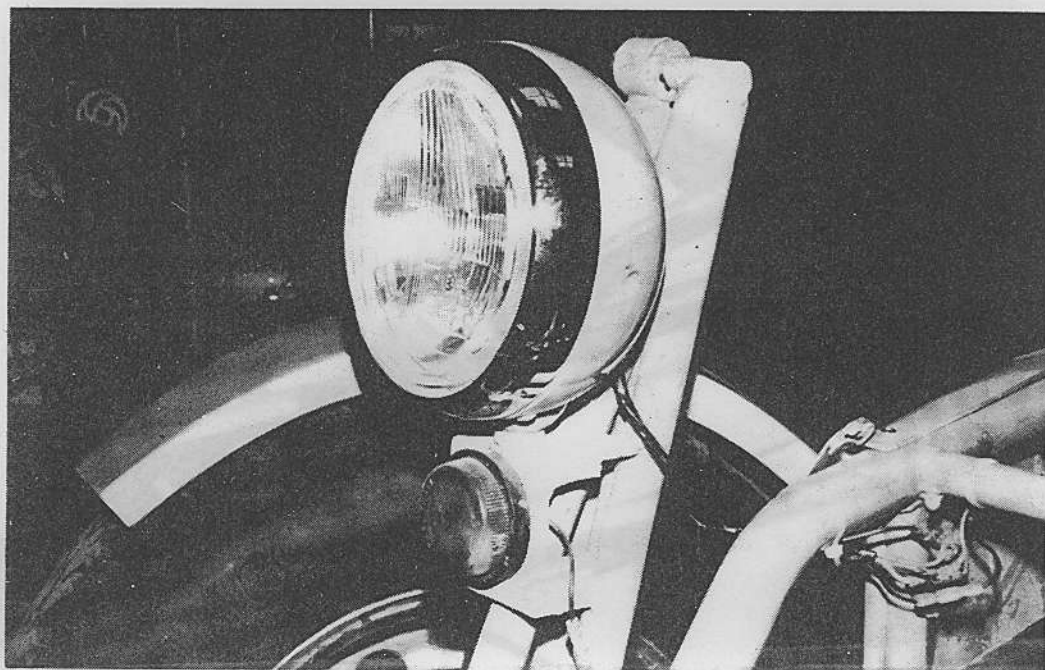


THE WIRING SIDE  
DASH FA

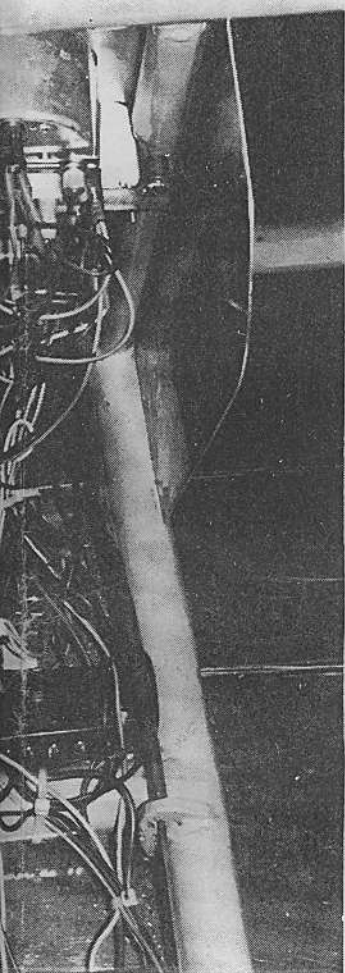
the unique  
vehicle &  
accessory co ltd



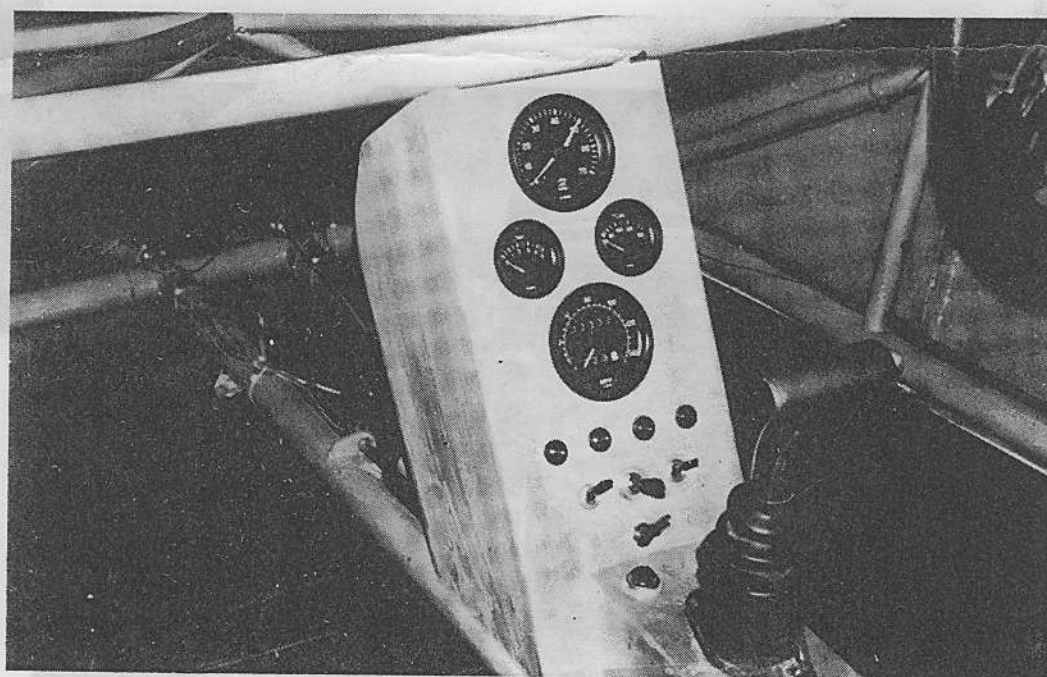
UVA Ltd Argent's Mere High Technology Park  
Hambridge Lane Newbury Berkshire RG14 5TU  
England. Telephone: 0635 33888 Telex: 848227



FRONT HEADLAMP AND INDICATOR MOUNTING POSITION



IDEA BETWEEN THE  
FACIA



IDEA FOR A DASH FACIA

BIRD'S EYE VIEW OF CLUTCH PEDAL INSTALLATION

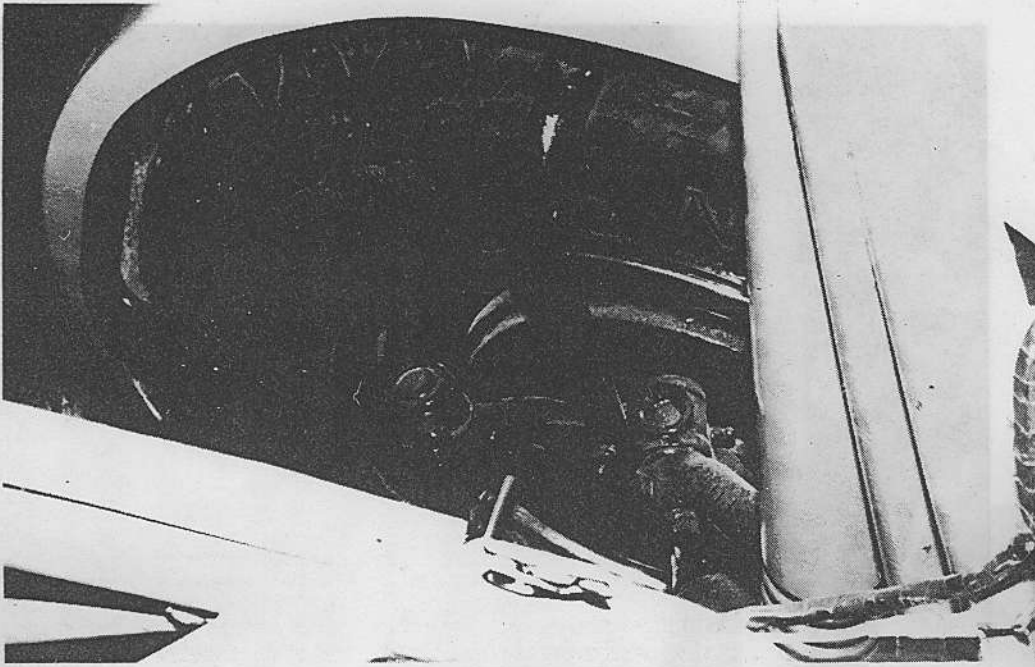
TD 34 B

the unique  
vehicle &  
accessory co ltd

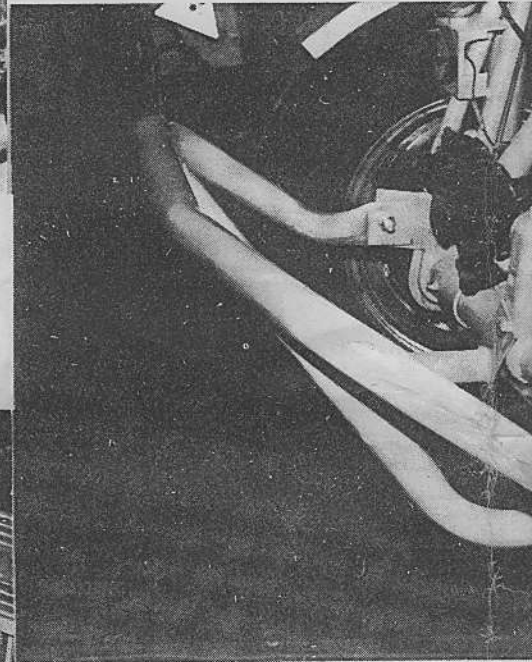
UVA Ltd, Argent's Mere High Technology Park  
Hambridge Lane, Newbury, Berkshire RG14 5TU  
England. Telephone: 0635 33888 Telex: 848227



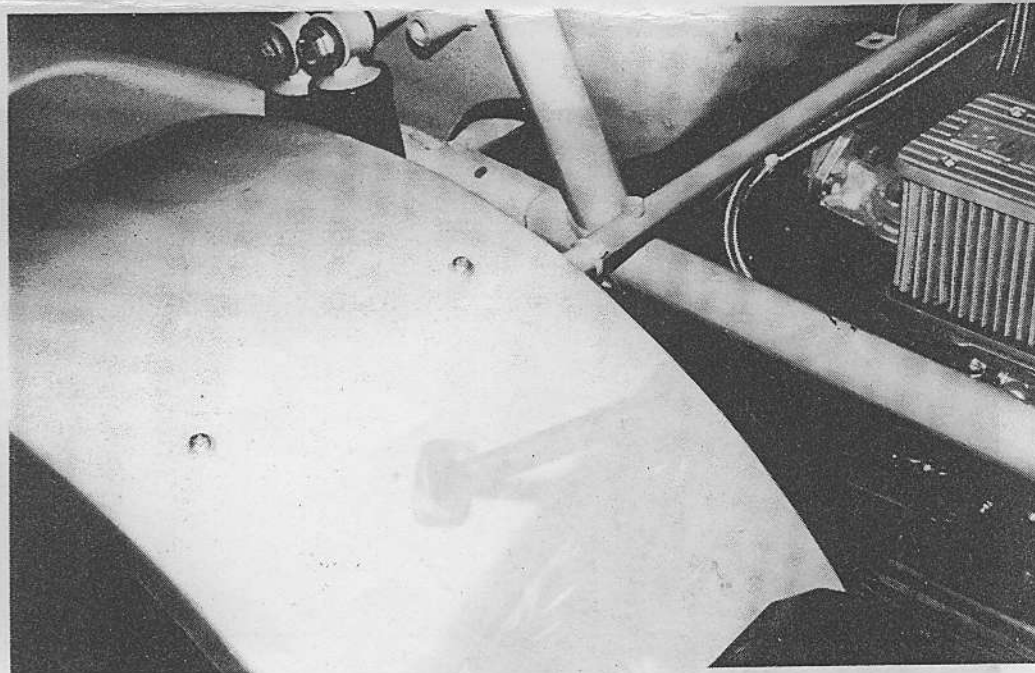




FRONT WING MOUNTINGS CAN BE INSTALLED ON TO  
THE HUB



B5539 FRONT BUMPER CAGE

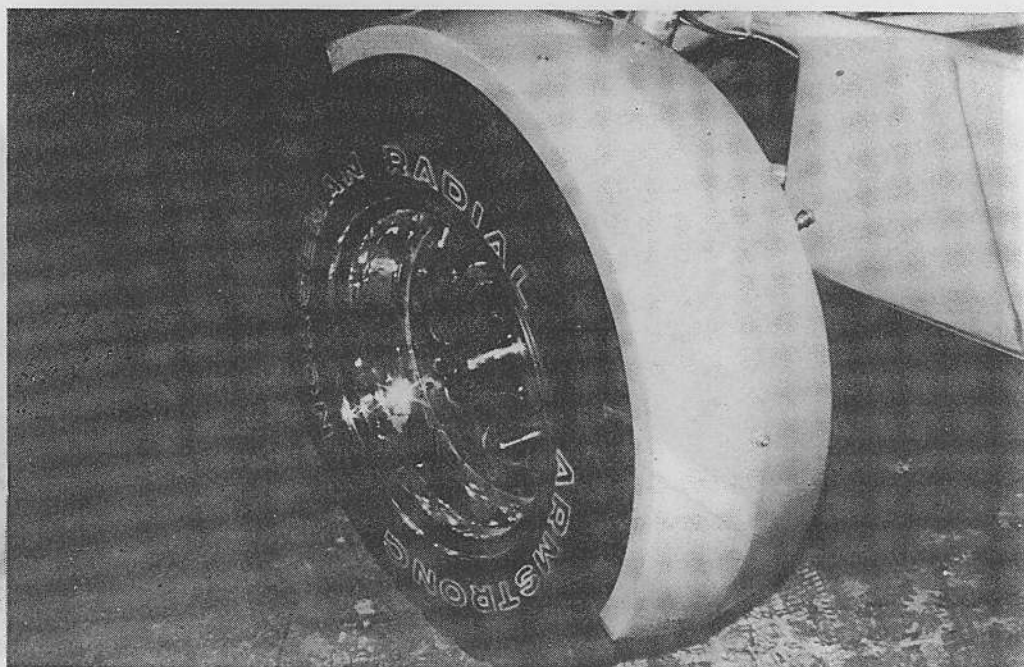


THE REAR WING MOUNTING CAN BE ACHIEVED WITH A  
SINGLE STEEL SUPPORT TO THE TOP OF THE WING  
FROM THE CHASSIS. THE FRONT OF THE WING SHOULD  
BE DRILLED AND BOLTED WITH LARGE WASHERS TO THE  
SIDE BODY PANELS

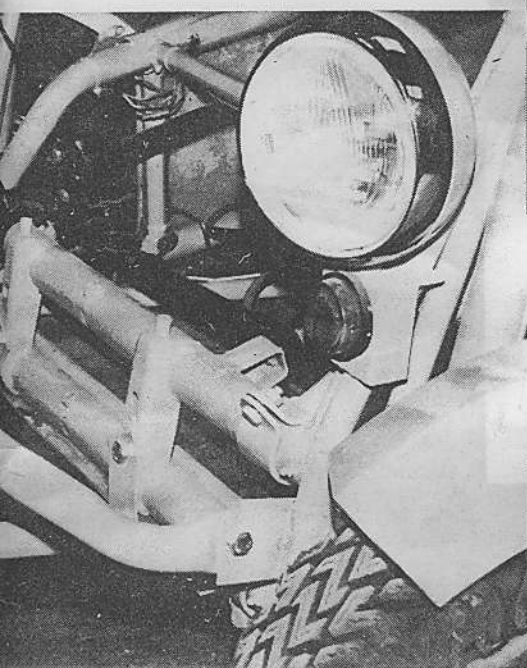
the unique  
vehicle &  
accessory co ltd



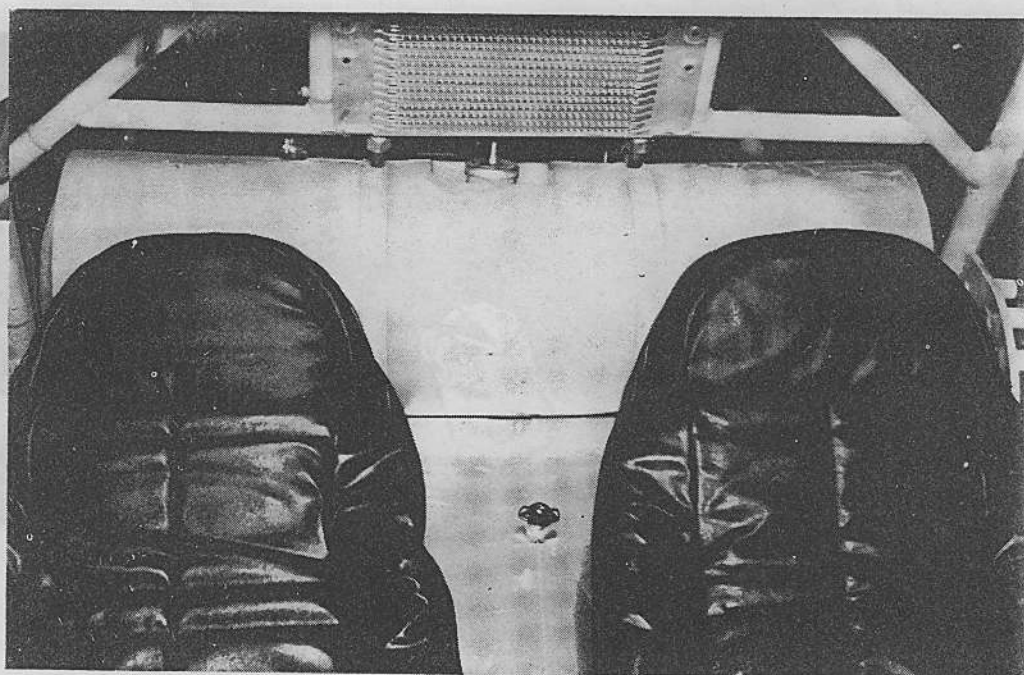
UVA Ltd Argent's Mere High Technology Park  
Hambridge Lane Newbury Berkshire RG14 5TU  
England. Telephone: 0635 33888 Telex: 848227



WITH THE FRONT MUDGUARDS MOUNTED TO THE HUBS  
THE MUDGUARD WILL BE CLOSER TO THE TYRE



GE MOUNTING POSITION



AN ALTERNATIVE POSITION FOR THE BUGPACK FUEL TANK

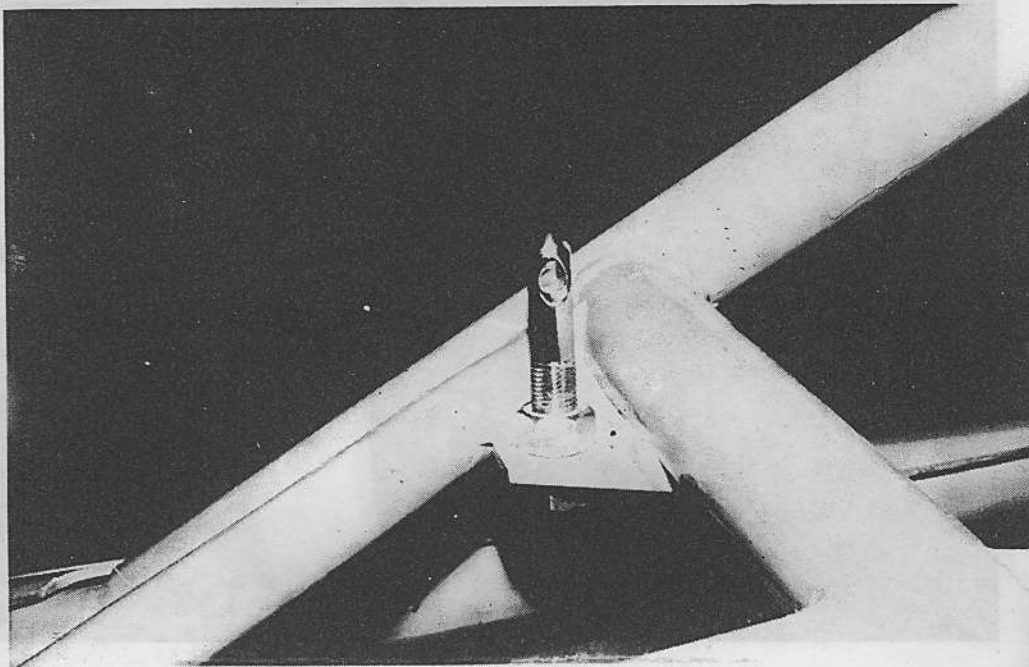
TD 34 C

the unique  
vehicle &  
accessory co ltd

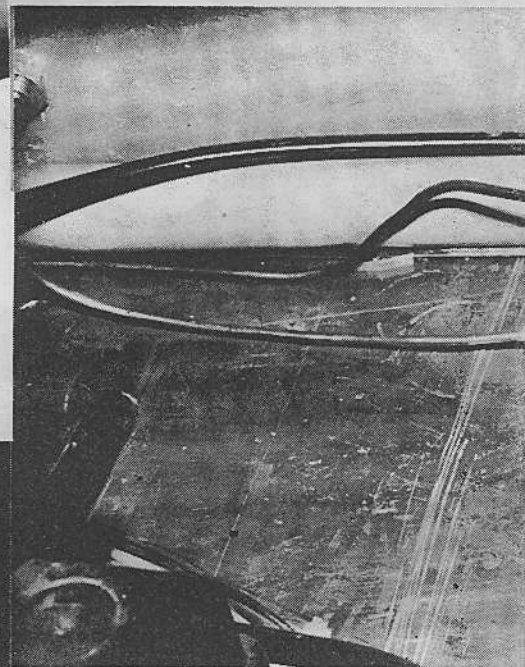


UVA Ltd Argent's Mere High Technology Park  
Hambridge Lane Newbury Berkshire RG14 5TU  
England. Telephone: 0635 33888 Telex: 848227

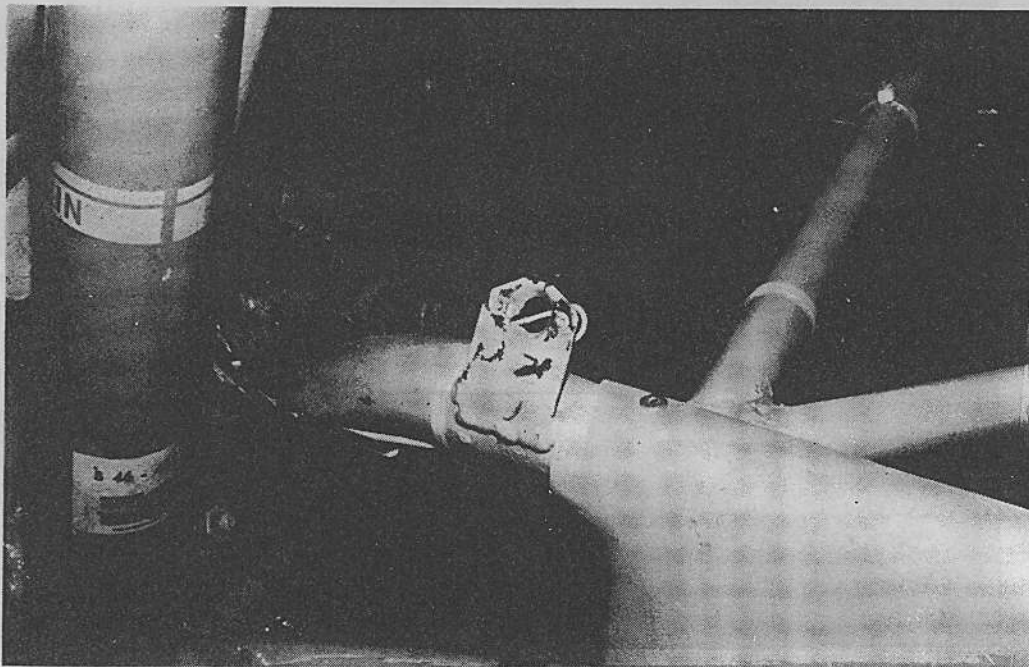




WITH THE FRONT HUGGERS MOUNTED TO THE HOBS  
REAR MOUNTING FOR BONNET



BRAKE LIGHTS ARE EASILY  
A HYDRAULIC BRAKE LIGHT  
LINE AS SHOWN (ONLY REQU  
BRAKE MASTER

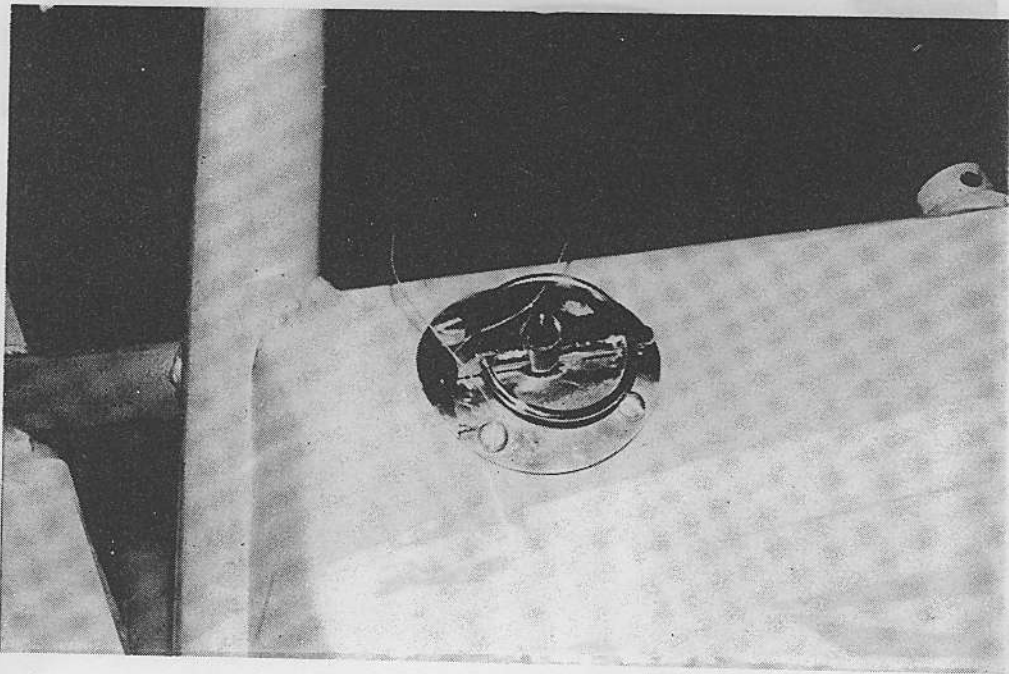


AN ALTERNATIVE POSITION FOR THE BUGPACK FUEL TANK  
BONNET FRONT MOUNT WITH DZUS CLIP WELDED IN  
POSITION

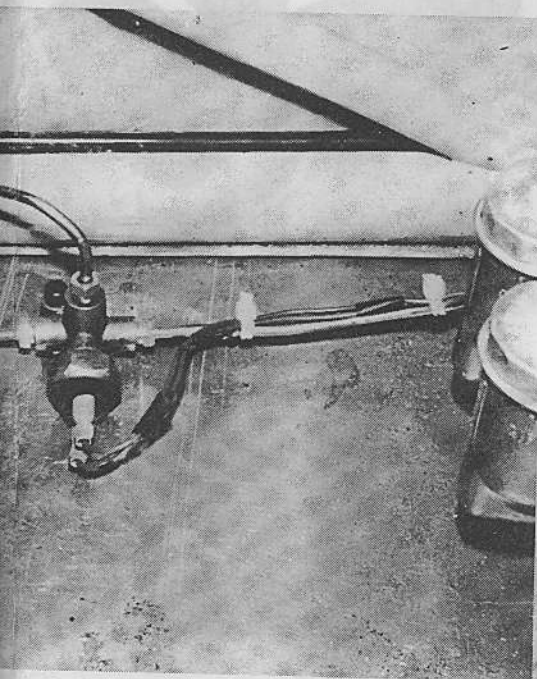
the unique  
vehicle &  
accessory co ltd



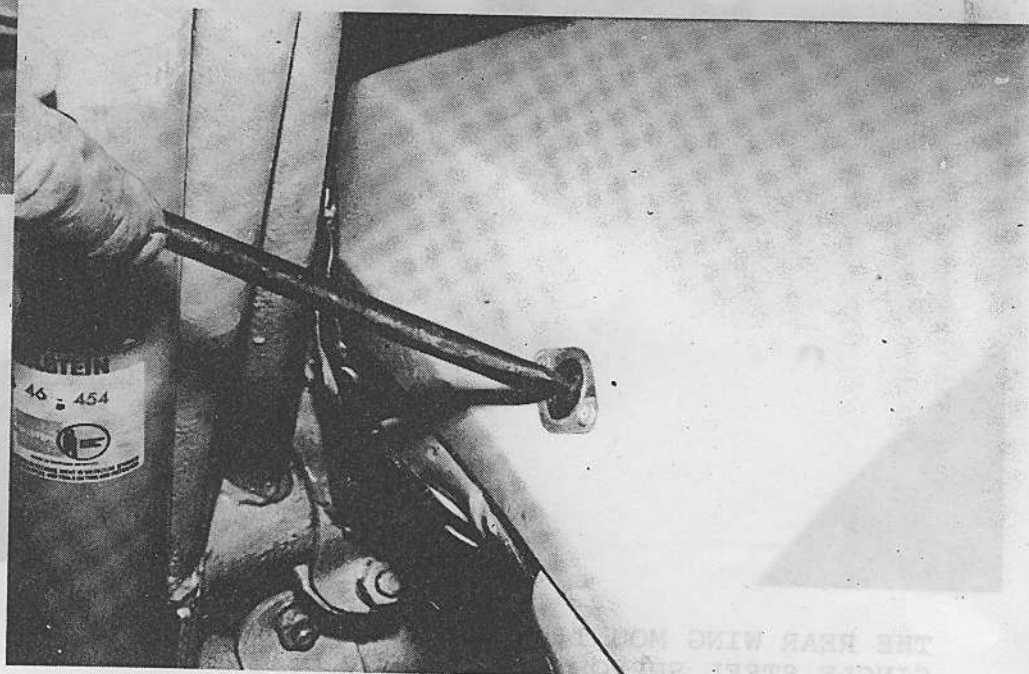
UVA Ltd Argent's Mere High Technology Park  
Hambridge Lane Newbury Berkshire RG14 5TU  
England. Telephone: 0635 33888 Telex: 848227



REAR BONNET MOUNTING WITH BONNET IN POSITION



ACHIEVED BY INSTALLING  
SWITCH IN THE BRAKE  
REQUIRED IF NOT USING BEETLE  
CYLINDER)



BONNET IN POSITION SHOWING DZUS CLIP

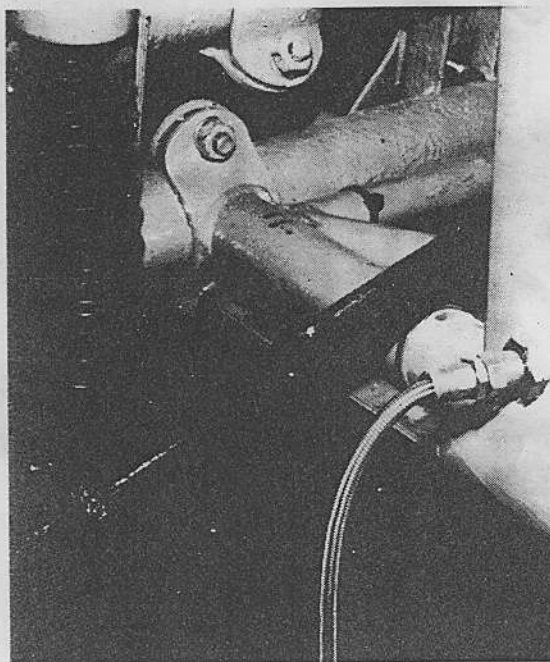
TD 34 D

the unique  
vehicle &  
accessory co ltd

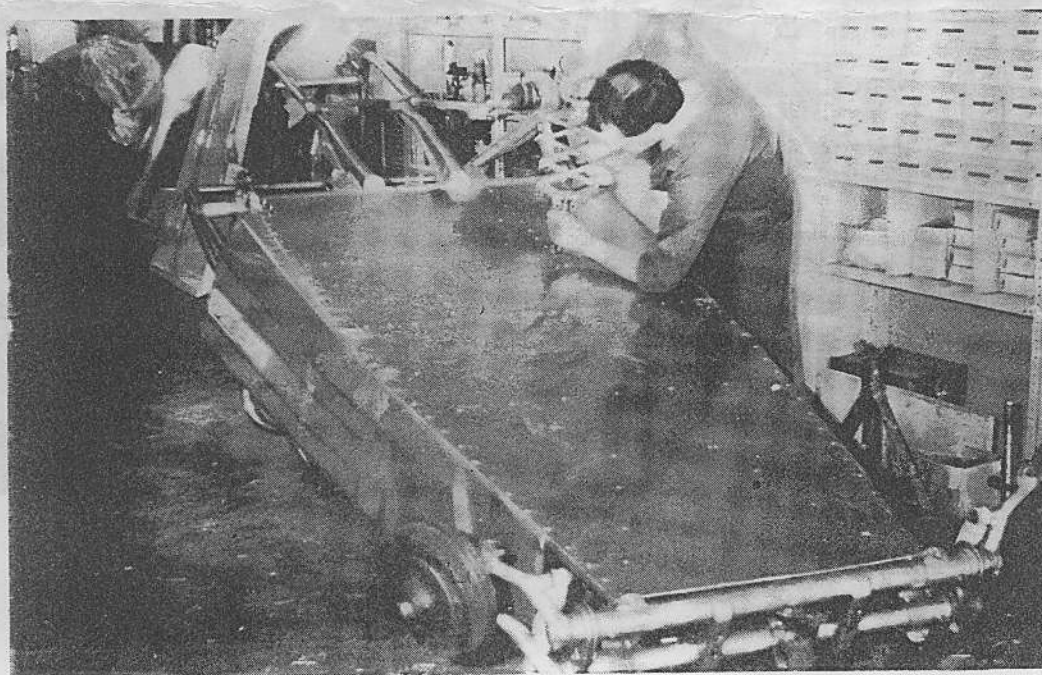


UVA Ltd Argent's Mere High Technology Park  
Hambridge Lane Newbury Berkshire RG14 5TU  
England. Telephone: 0635 33888 Telex: 848227

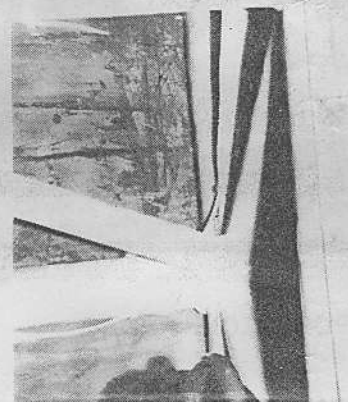
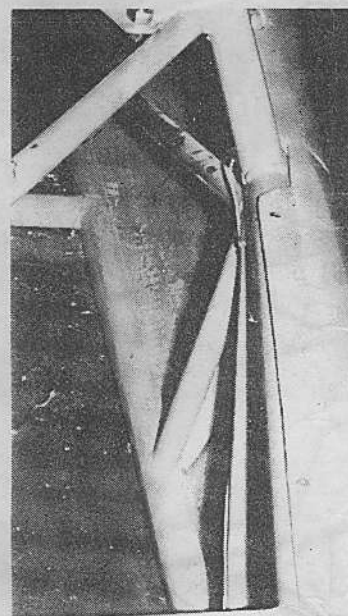




FRONT HYDRAULIC BRAKE PIPES CAN EITHER BE ATTACHED TO A WELDED BRACKET OR FITTED THROUGH A BODY PANEL AS SHOWN



IT IS EASIER TO RIVET FLOOR WITH CHASSIS INVERTED

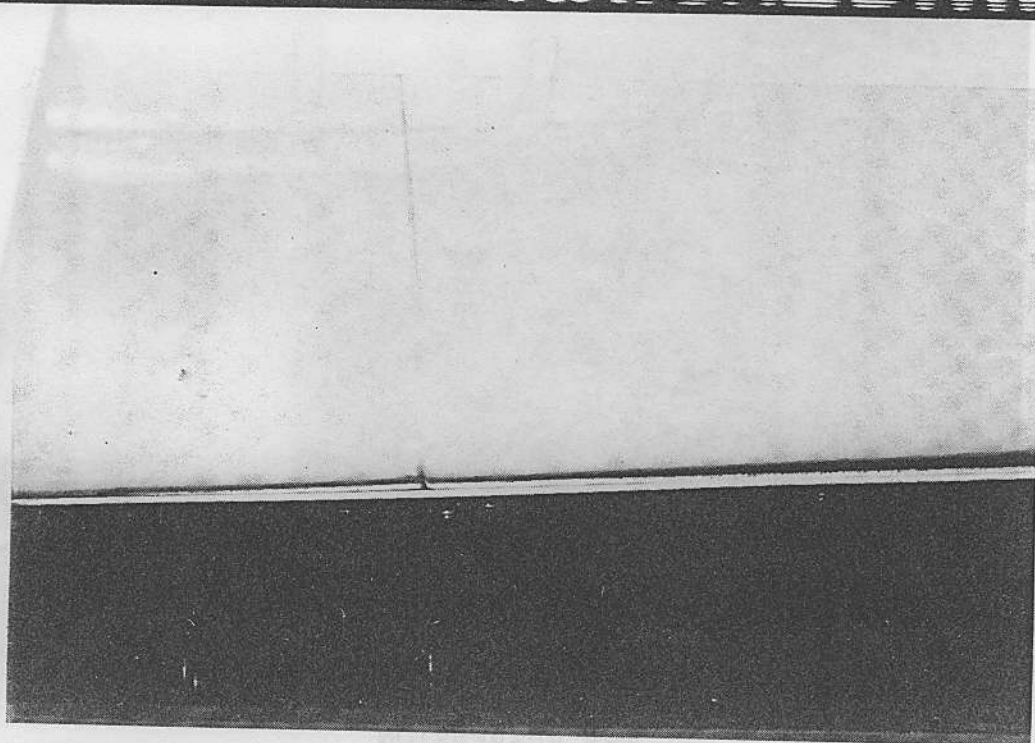


SIDE PANELS SHOULD BE FITTED TO TOP TUBE AS SHOWN

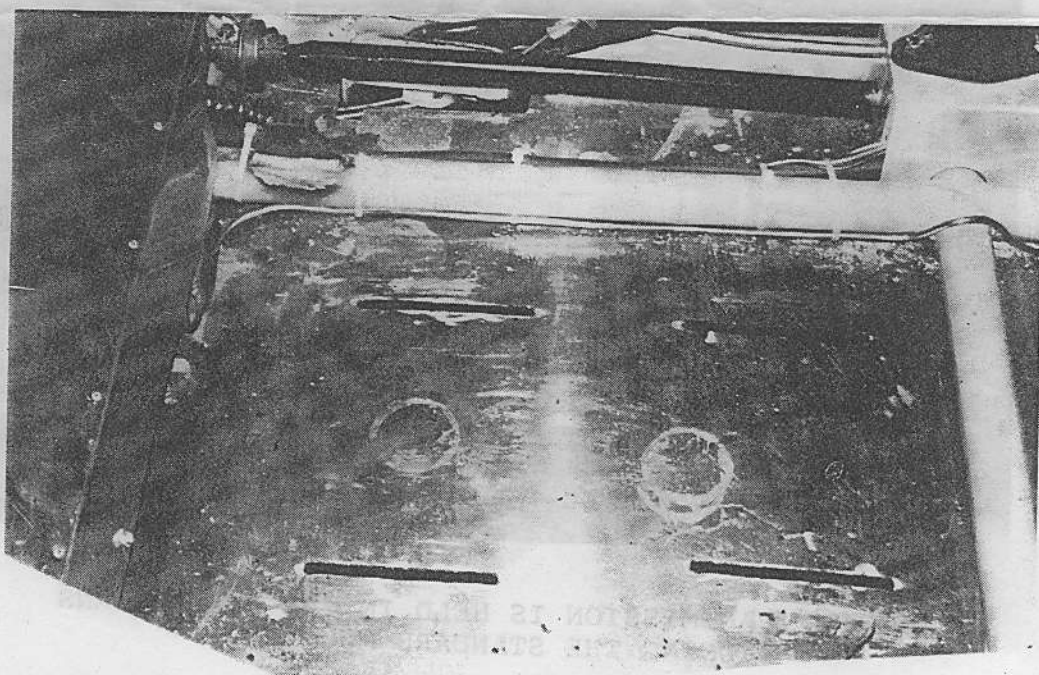
the unique  
vehicle &  
accessory co ltd



UVA Ltd Argent's Mere High Technology Park  
Hambridge Lane Newbury Berkshire RG14 5TU  
England. Telephone: 0635 33888 Telex: 848227



SANDWICH SIDE BODY PANELS BETWEEN CHASSIS RAIL AND FLOOR RIVETING THROUGH BOTH



OULD BE RIVETED  
S ILLUSTRATED

TO SIMPLIFY DRIVER SEAT ADJUSTMENT AND TO KEEP SEAT HEIGHT LOW, ELONGATE SLOTS IN THE FLOOR TO ALLOW BOLTS TO SLIDE FORWARD AND REVERSE

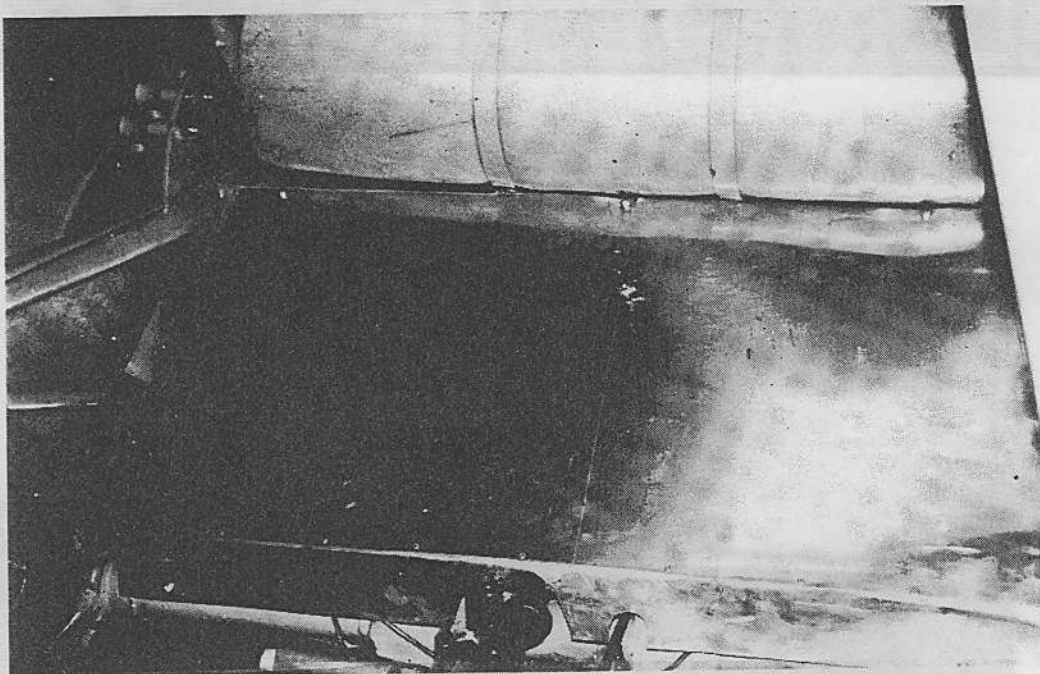
TD 34 E

the unique  
vehicle &  
accessory co ltd

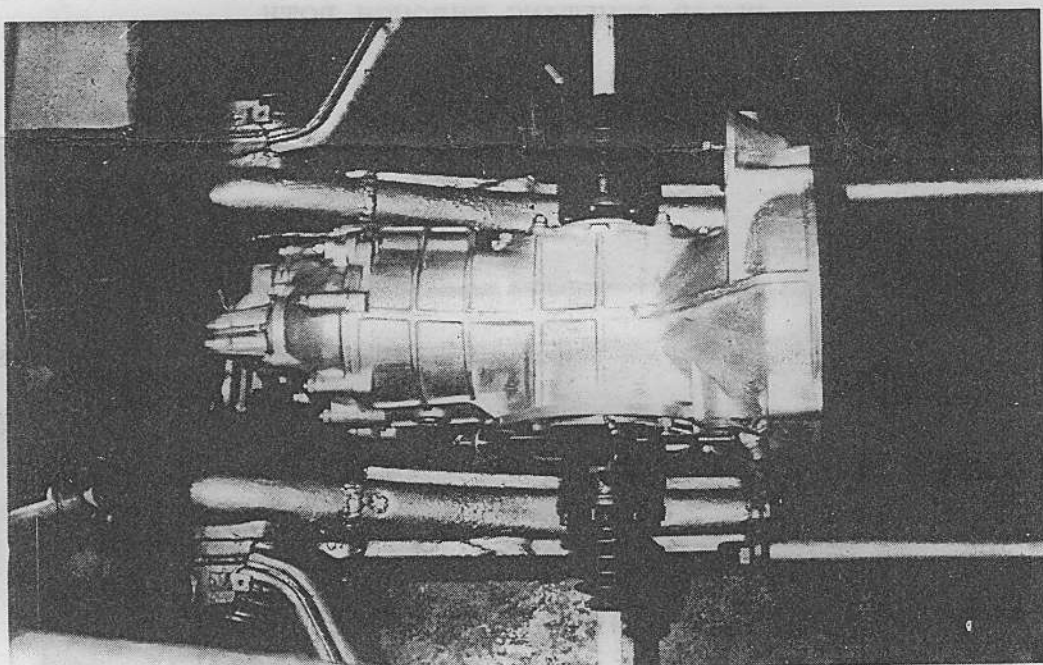


UVA Ltd Argent's Mere High Technology Park  
Hambridge Lane Newbury Berkshire RG14 5TU  
England. Telephone: 0635 33888 Telex: 848227

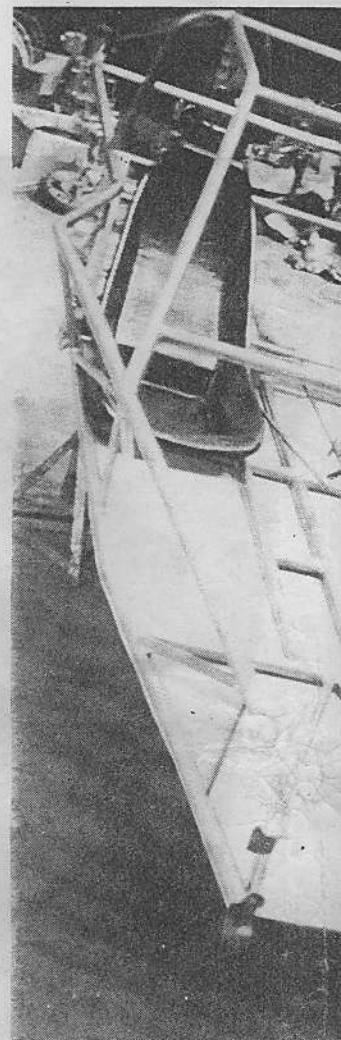




ALLUMINIUM IS AN IDEAL MATERIAL TO MAKE THE  
BULKHEAD BETWEEN THE REAR OF THE SEATS AND  
THE SUSPENSION



THE VW TRANSMISSION IS HELD IN THE FRAME HORNS  
USING THE STANDARD MOUNTS

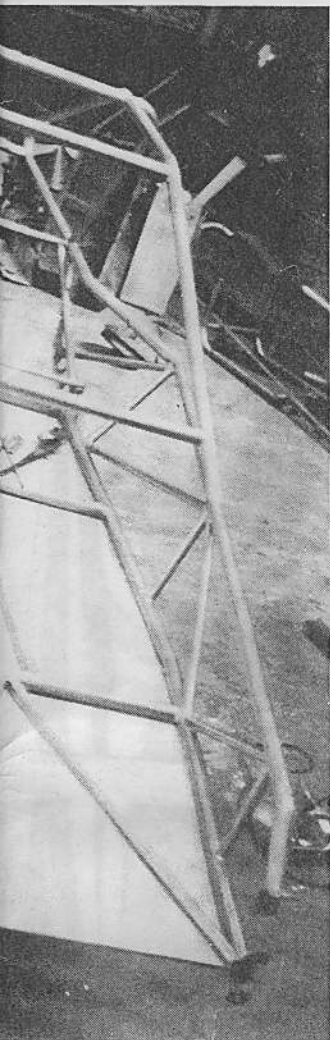


SEATING POS

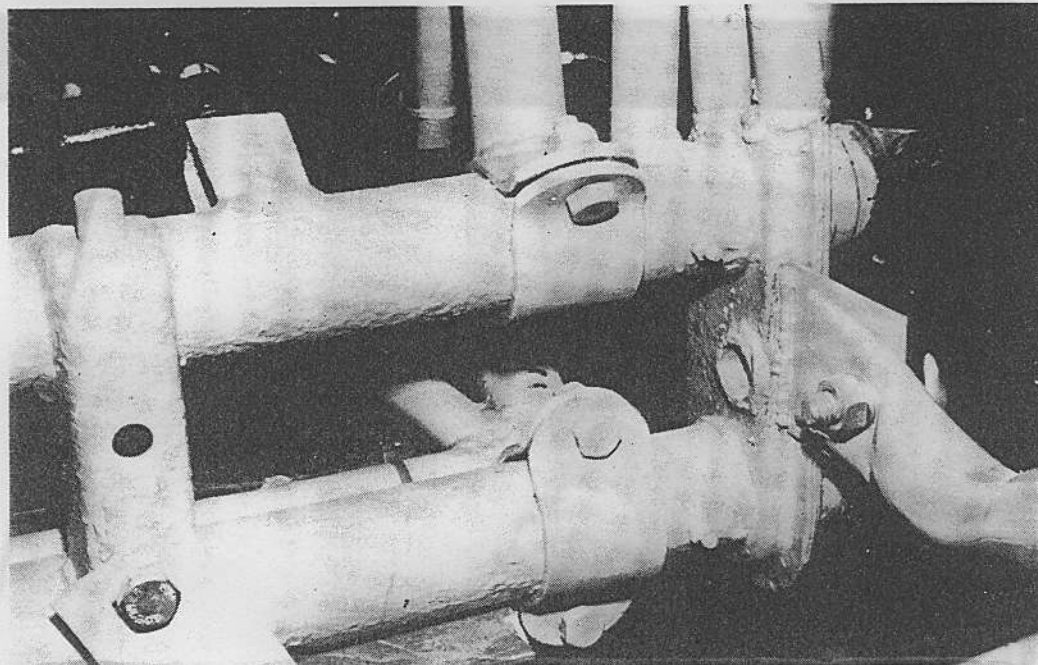
the unique  
vehicle &  
accessory co ltd



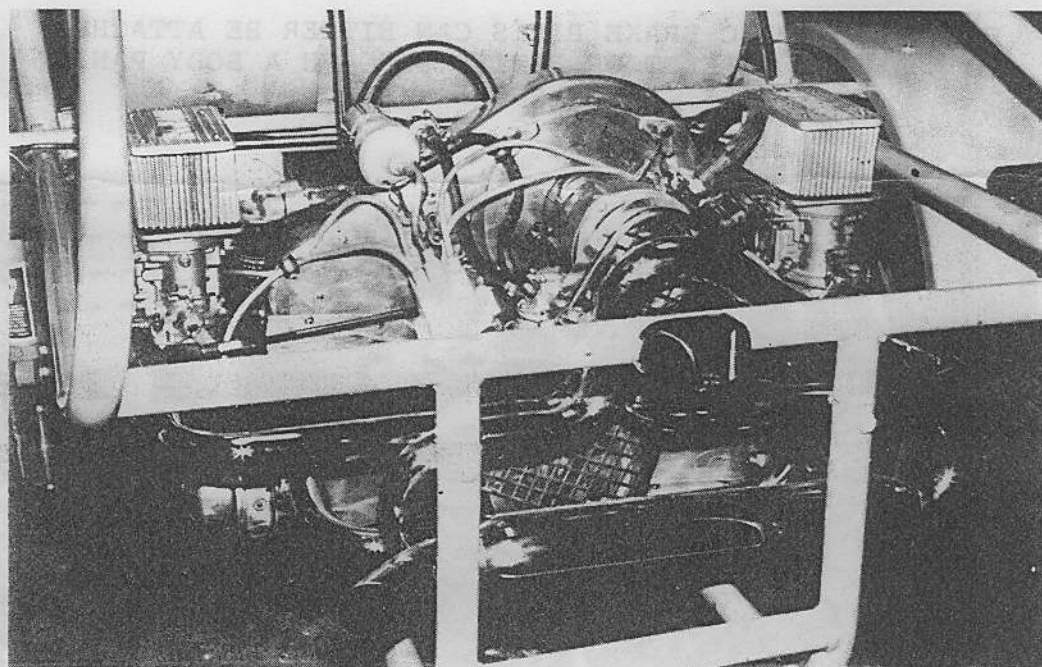
UVA Ltd: Argent's Mere High Technology Park  
Hambridge Lane Newbury Berkshire RG14 5TU  
England. Telephone: 0635 33888 Telex: 848227



SITION



THE FRONT SUSPENSION IS HELD IN POSITION WITH  
FOUR CLAMPS



THE REAR BUMPER CAGE ATTACHES AS ILLUSTRATED

TD 34 F

the unique  
vehicle &  
accessory co ltd



UVA Ltd Argent's Mere High Technology Park  
Hambridge Lane Newbury Berkshire RG14 5TU  
England. Telephone: 0635 33888 Telex: 848227